



McLean Art Society

Palette

November 2022

From the president

After the beautiful colors that the fall bestowed upon us this year, we have arrived to the start of the season of festivities, gatherings, and family time. In the spirit of the Thanksgiving week, I would like to thank all the members for being a part of the McLean Art Society, for being involved in the arts and the local community!

In November, we continued to have successful shows and sales at the Spring Hill and Oak Marr Rec Centers. As always, our wonderful curators will announce the next changeover dates via email. We also have a committee working on the application to show at Tysons Corner via ArtsFairfax. If you would like to be a part of the applicants' pool, please upload your bio and the images (best quality possible) of your work to the MAS website. This does not oblige you to show; however, only those who have uploaded their work, will be able to be participate, if our application is successful. Uploading your work will also make our website more complete! Only 1/3 of our members has used this resource so far. Let's make it at least 2/3! I also wanted to mention the new live paint-and-chat sessions organized by Dipali and Larry at the Walker Chapel once a month. We had the inaugural session on November 17 and will restart after the New Year. Details will be emailed.

We are having our annual Holiday Party on December 11, 12pm-2pm. The invitations were sent and probably received by mail. Please RSVP with our gracious hosts, who are preparing all the food. In lieu of bringing a potluck dish, we are asked to bring a \$5 check or cash, check payable to Share, Inc. or Share of McLean as the contribution to the Food Bank in McLean.

See you soon at the party!
Anna



Anna Katalina
President MAS
www.annakatalina.com



MAS News & Notes

Spring Hill

One of our favorite places with easy access is now in place for a series of shows as listed below. Delivery time is on Tuesdays is 11:00 AM. You can bring two paintings to display. The paintings must have sturdy wires on the back. Sawtooth brackets are not usable with our Walker hanging system. You do not have to preregister. Just fill in the labels and print them ahead of time. Forms for the labels as well as the Hanging Framing Standards are available on the McLean Art Society's website on the Events menu tab or

[CLICK HERE.](#)

Our shows change approximately every six weeks. Here is the planned schedule for the show changes at Springhill:

Oct 25, 2022 – Dec 6, 2022

Dec 6, 2022 – Jan 17, 2023

Jan 17, 2023 – Feb 28, 2023

Feb 28, 2023 – Apr 11, 2023

Apr 11, 2023 – May 23, 2023

Please contact Carol Higgs if you have any questions

Oak Marr Recreation Center in Oakton

Our second show opened on November 2, with 19 pictures by 12 artists. Two rods from Wok N Roll were added. OakMarr has not yet received the planned hanging rails.

Next show change: Wednesday, December 7 at 10:20am. A call for art will be sent to all members. If you have any questions, contact our curator, Margaret Raymond.

Tysons Corner !!!

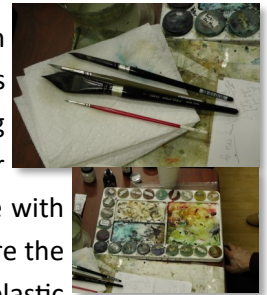
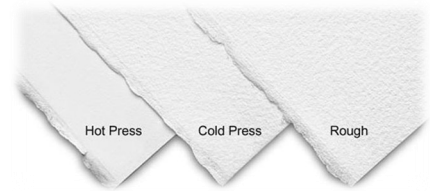
We are preparing a submission for a juried selection of exhibitors at a Tysons Corner sponsored show. We are listing all artists listed on our home page. If you are not on the list and wish to be included, send your request to Renee Alberts and Larry Danforth (larry@jlsystems.com) right now! **Only artists on the application will be permitted to display their art.**



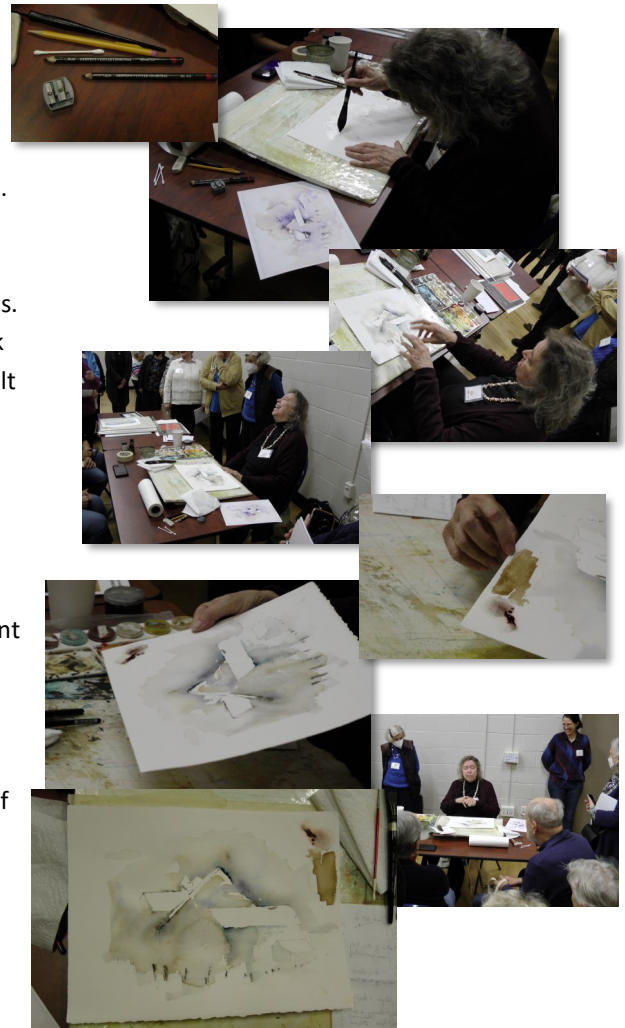
McLean Art Society - November 2022

ALEX TOLSTOY

The first thing to do is select your materials. There is hot press paper which has a smooth, hard surface. Good for hard, sharp lines but hard to use. Next is cold press paper which has a semi-rough surface good for many works. What Alex likes is called rough paper and it has the most texture. She likes the 140lb paper in sheets of 22" x 30" which she folds in fourths and hand tears to have an irregular edge. Alex uses black velvet paint brushes starting with a large mop for the big areas like the sky. Then she uses two pointed round brushes, smaller in size a 5-8 and an 5-10, one is black velvet and the other is Escoda. Last is a thin brush to use with white wash to highlight. Then there is the paint. The key is to use quality professional paint where the pigments will separate from the water and adhere to the tooth of the paper. She uses little plastic containers for her paint that seal tight and keep the paint wet for a long time. A staple is a mix of blue and burnt sienna which has different affects...sometimes the blue comes out and other times the brown dominates. Another product Alex has started to use is [Golden Crackle Paste](#) which comes in a jar. You put it on with a palette knife and let it dry for 24-hours and then paint on it.



Alex started her sample with a simple sketch using charcoal pencil of what she was going to paint. The charcoal is water-soluble and so if you want, it will fade away. Typically she starts with the sky using the mop brush with plain water at first then adds a bit of the blue / burnt sienna mix moving from dark to light. When it dries it will leave an outline at the edges of the puddle. For Alex, the sky has to work in order to continue with the painting. Alex paints in a loose style letting the paint go where it wants. She emphasizes the corner of the buildings, the fences, and focus points. She blots the paint if it goes in unwanted spaces and uses Q-tips for small spaces. As an accent color she loves indigo blue...lightly. The smaller brushes work best on the corners of the building for more control. For a less-defined result she makes her marks more random. For color she adds the color and then adds water to let it bleed. Try different colors for interesting results, sometimes only visible after the paint dries.



For fences make them random...different angles, shapes and sizes. You can wet the charcoal pencil to make nice fence marks. Also, do not keep the brush in the water. Clean it and wipe it off to store it. If the watercolor paint dries on a brush or where it doesn't belong, it will be hard to remove.

After the painting has dried, if there are a few marks that you would like to remove, you can use the white wash right out of the tube with the small brush to paint over them to cover them up. Don't let the wash tough any of the paint as it will kill the color.

Her timeline for a painting usually runs a half-hour and to resist the temptation to over-paint a subject. Let it be loose, random and let the viewer complete the picture in their mind.

Many great side discussions that made the hour together special!



McLean Art Society - November 2022

From Yvonne Leung

This is the painting I sold at Spring Hill Rec center - Moonlight over Marsh
11x14 on canvas.



Falls Scene



Bird Watch



Moonlight over Marsh

From Carol Waite www.carolwaitepaintings.com

I entered the national juried show of the Sumie Society of America and my painting won an award! I have been juried in every year, but this is the first award for me! My painting was titled Peonies of Spring.



Peonies of Spring

From Ray Goodrow <https://www.raygoodrow.com/>

Ray Goodrow's watercolor "Mad Men Winter" received a second place award in the Southwestern Watercolor Society's 59th Annual Exhibition in Dallas, September 25. Ray has achieved "signature" status in the organization. Ted Nutall, watercolor portrait artist, was juror for the show and selected 80 paintings to exhibit from 300 entries.



Portland Lily



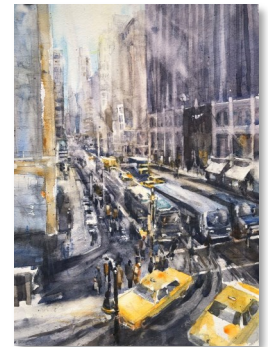
Re



Founding Family



Financial Winter



Mad Men Winter



Girls are Dancing



McLean Art Society - November 2022

From Dipali Raba



Mixer with Egg



Cracked Egg (sold)



Cups and Oranges (sold)

From Margaret Raymond



The Color of September



Four Leaves

From Maggie Newman

Four paintings sold at Spring Hill





McLean Art Society - November 2022

From Lori Lisiecki



On My Windowsill



Friends



Reflections



Nuremberg Nocturne



Lilies Among Reeds



Sun Spills in My Window



Tea and Oranges



French Cafe



Riding Waves



McLean Art Society - November 2022

From Cathy Swartz



Cupcakes and Stripes



Rose in a Teacup



Spring Peonies



Italian Jug and Flowers



Donut Holes

From Asmita Nagar Upadhyay



Asmita



Fishes

From Tinu Prakash



Girl with a Hat



Bright Day



Under the Trees



Looking Through



Lady



McLean Art Society - November 2022

From Jane McElvany-Coonce



Tunnel to Central Park



Waterfall



Birds Eye View of Georgetown



Moonstruck



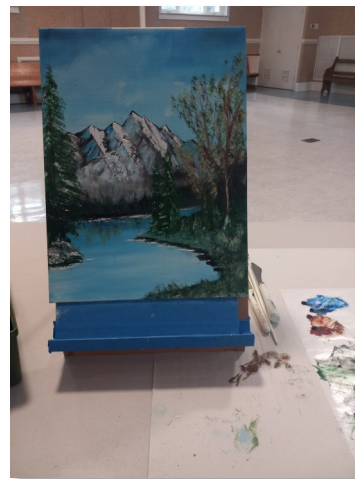
Sunglasse: Lost & Found

Arts & Crafts at the Chapel

The McLean Art Society sponsored a special afternoon at the Chapel for painters of all skill levels...beginners to professionals...to share ideas and techniques as we created our works of art.

There was a painting demonstration by Larry Danforth of combining sky, mountain, and lake in a winter scene. From start to finish, in one hour, the scene came alive.

Dipali Rabadiya, a professional artist from McLean Art Society, worked to finish a wonderful scene of a little girl at the seashore. Here are two of her other paintings...



*Next Arts & Crafts Day is
January 19th, 1-3:30pm*



McLean Art Society ~ November 2022

Our Board

MAS Executive Board

2022-2023

President – Anna Katakina

Vice President – Sandra Hill

Secretary – Carol Waite

Treasurer – Judy Landry

Chairs

Directory – Hanna Emrich and Lori Lisiecki

Email distribution – Lori Lisiecki

Facebook – Anna Katakina

Hospitality – Hanna Emrich

Instagram – Anna Katakina

Membership – Lori Lisiecki

Name Tags – Diane Moran

Newsletter – Larry Danforth

Parliamentarian – Mary Jeanne Martz

Patron's List – Yvonne Leung

Program Coordinator – Dipali Rabadiya

Publicity – Volunteer Needed!!!!

State Agent – Ginger Sanaie

Venues

Oak Marr – Margaret Raymond

Spring Hill – Carol Higgs and Carol Milton

Westover Library – Bill and Betty Dunn

Dolley Madison Library – Olga Martin

MPA/TD Bank – Hanna Emrich and Vicky Wilken

Volunteer Coordinator – Jane Coonce

Webmaster – Larry Danforth

At Large Members – Ginnie Luster and Vicky Wilken

INSTAGRAM PAGE:

<https://www.instagram.com/mcleanartsociety/>

You should be able to view it from any browser, but to see our page fully, you may need to have an Instagram account. If so, just go to www.instagram.com to sign up.

Here is a link to a YouTube video that is very helpful in getting started:

<https://m.youtube.com/watch?v=no55N1sHjT8>

FACEBOOK PAGE:

The page is called McLean Art Society.

Click [HERE](#) to view the page.

To sign up with a new account, go to facebook.com and click on **Create New Account**. Enter your name, email or mobile phone number, password, date of birth and gender. Then click on **Sign Up**. To finish creating your account, you need to confirm your email or mobile phone number.

The Mclean Art Society Palette

The Palette newsletter is a monthly production of the McLean Art Society and while intended for the active members and sponsors of the Society, distribution is unrestricted and unrecorded. All stories and artwork are printed with permission of the artist. All content is ©Copyright protected by the McLean Art Society and individual works are ©Copyright protected by the artist. No reproduction of any artwork is permitted without the express permission of both the McLean Art Society and the artist that created the work. Your cooperation is appreciated.